

The Message is  
in the Music

# WGRC Newsletter

Volume 8 Issue 3

May/June 2007

WGRC is heard on  
frequencies:

91.3 FM  
Lewisburg

90.7 FM and 107.1 FM  
Williamsport

90.9 FM  
Lewistown

91.9 FM  
Pottsville

101.7 FM  
State College

107.7 FM  
Bloomsburg

Inside this  
issue:

Mark Your Calendar 2

Volunteer Luncheon 2

Making An Impact 3

Featured Donor 3

Hot New Music 4

## Newsroom wins top AP award

The WGRC news department was honored with the Joe Snyder Award for Outstanding News Service for the second year in a row.

During an awards banquet at the annual Pennsylvania Associated Press Broadcasters Association Convention, WGRC received eight first place awards for Spot News, Continuing Coverage, Enterprise Reporting, News Documentary, Radio Sound, News Program, Feature and Sports Feature stories.

They walked away with eight second place awards for Enterprise Reporting, Continuing Coverage, Regularly Scheduled Newscast, Public Affairs, Feature,

Series, Radio Sound, and Sports Play-By-Play categories. Three third place awards were also given for Public Affairs, Series, and Spot News.

Award-winning entries included WGRC's continuing coverage of the Trevorton Fatal Fire and the June 2006 Flooding, a week-long feature of activities surrounding the Little League World Series, and The Matter At Hand program, *Organ Donation: Giving Someone a Life*.

WGRC also, for the twelfth year in a row, received the Outstanding Membership Cooperation award from the Associated Press.



From left to right: WGRC PM Anchor John Callahan, AP Bureau Chief Dick Lawyer, WGRC AM Anchor Jim Diehl

## Lightning Strikes WGRC

Lightning struck WGRC during an evening storm on May 1, leaving the station with approximately \$9000 in damages.

Engineer, Chris Miller, has been hard at work, repairing equipment and ordering new parts.

Currently the casualties consist of the Optimod (signal processor), the main on-air mixing console, the Streaming PC (which has been damaged beyond repair) and the Transmitter Remote Control. The main transmitter has already been replaced and is up and running.

WGRC is running at about 70% of what it normally does, but God is continuing to provide. Insurance is also covering much

of the bill.

Anyone wishing to make a donation may contact WGRC at 1-800-546-WGRC (9472) or visit us online at [www.wgrc.com](http://www.wgrc.com). Any assistance is greatly appreciated.

**Get the podcast!**

...Coming This Summer...

Download episodes of *Get Real*  
and *The Matter At Hand* at  
[www.wgrc.com](http://www.wgrc.com)





No Summer Skating  
See you in  
September!

## Mark your calendar...

6-23-07 *WGRC* Benefit Concert at Central Oak Heights, West Milton; 7:00 p.m.; featuring Christian Music artist Kirk Talley; click here for more information

6-27-30-07 Creation Festival 2007 at Agape Farm, Mount Union; for tickets and details, visit [www.creationfest.com](http://www.creationfest.com)

9-6-07 *WGRC* Skate Fellowship at Sunset Skating Rink, Routes 11&15 in Shamokin Dam; 7:00 - 9:30 p.m.; \$3 admission (skate rental is extra)

## Our volunteers are *priceless treasures*



Nearly twenty *WGRC* volunteers and board members were recognized for Volunteer Appreciation Month.

On April 14 a luncheon was held at La Primavera Ristorante in their honor.

## *WGRC* welcomes new staff members

**Terry Burke**  
*Weekend News, Sports and Weather Anchor*

Terry joined *WGRC* in April, anxious to return to the broadcasting profession. He got a taste of *WGRC* broadcasting last fall as a sideline reporter, reporting on injuries and any other tid-bits from the field, and interviewing coaches at half-time and after the Friday Night High School Football game.

You can hear Terry on the weekends. He'll be gathering and reporting the relevant news issues of the day to keep listeners informed of the happenings in their communities.

Terry lives in Lewisburg with his wife, Elizabeth, and his three month old son, William.

He enjoys sports, travel and hanging out with his family.

**Pete Christensen**  
*Development Director*

"I always believed in radio as an effective means to communicate the gospel, reach the unreachable and to edify and equip the believer," says Pete.

Pete has just begun his new position at *WGRC*. He plans to maintain and establish donor relationships with individuals and businesses as well as direct major donor development, grants and fundraising efforts.

He encourages listeners to contact him if they would like to contribute financially to *WGRC*.

Pete lives in Lewisburg with his wife, Charlene. He enjoys spending time with his wonderful wife, daughters, their husbands, and grandchildren. He also likes to span the globe on the air via ham radio as a hobby.

# Making an impact

Thanks for all you do! We love *WGRC* and are blessed with all that we hear each day! The message is truly in the music.

-Loganton

My morning and afternoon commute wouldn't be the same without *WGRC*. May God continue to bless everyone at the station!

-Mill Hall

Thank you for your ministry. We really appreciate the quality of programming we receive every day.

-State College



What if *WGRC* earned a penny every time you searched the Internet? Well, now we can!

GoodSearch.com is a new search engine that donates half its revenue, about a penny per search, to the charities its users designate. You use it just as you would any search engine, and it's powered by Yahoo!.

Just visit [www.goodsearch.com](http://www.goodsearch.com) and be sure to enter *WGRC* Radio as the charity you want to support. Thank you for your continued support of *WGRC*.

## Become a Grant Underwriter

Make a meaningful impact in the lives of 80,000+ people in Central Pennsylvania by underwriting Contemporary Christian programming.

When your business, church or organization partners with *WGRC*, you will receive Donor Acknowledgement Announcements on the radio.\*

For more information on Grant Underwriting, visit [wgrc.com](http://wgrc.com) or call 1-800-*WGRC* (9472).

\*Content of Donor Acknowledgement Announcement is determined by FCC guidelines.

## WGRC's Featured Donor

Michelle Good of Beavertown was thrilled the first time she turned her dial to 91.3, and found *WGRC* Contemporary Christian Music. She had recently moved from Lancaster County and had to leave her favorite CCM station. Michelle has been a regular donor for the past ten years. She shares why *WGRC* programming is so important to her and her family.

**WGRC:** When do you listen to *WGRC* the most?

Michelle: I keep your little card with me, and when we get out of the area I tune into your other frequencies. Sometimes I listen all day long, but when I work it's just a little in the morning and then all evening. My 18 year old, Amy, listens to you a lot too. She and her friend listen to The Matter At Hand and then discuss it on IM.

**WGRC:** Who are your favorite artists/groups?

Michelle: Right now my favorite group is Third Day because of the song "Tunnel". I listen to it a lot and it gives me comfort.

**WGRC:** Why did you decide to partner with *WGRC*?

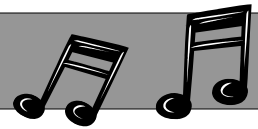
Michelle: I partner with you because I think kids should have neat Christian music to enjoy. Little did I know that *WGRC* would become my best friend over the years.

**WGRC:** How would you encourage other listeners to become partners with *WGRC*?

Michelle: There are a lot of hurting people out there and they are looking for help. We need to keep you on the air to reach the hurting.



# Hot New Music



"Be Still"  
Story Side B  
Album: *We Are Not Alone*  
Available 6-19-07

"Beautiful News"  
Matt Redman  
Album: *Beautiful News* -  
in stores now

"Believe"  
Clay Crosse  
Album: *Believe* - coming soon

"Cold"  
Marie Miller  
Album Coming Soon

"Coming Back to Life"  
Echoing Angels  
Album: *You Alone* - in stores now

"Give Me Words to Speak"  
Aaron Shust  
Album: *Whispered and Shouted*  
Available 6-5-07

"God Speaking"  
Ronnie Freeman  
Album coming soon

"I Will (Lift My Eyes)"  
Drew Cline  
Album coming soon

"Into the Day"  
Bebo Norman  
Album: *Between the Dreaming and  
the Coming True* - in stores now

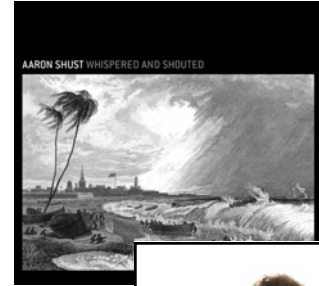
"Open"  
Jason Morant  
Album: *Open*  
Available 5-30-07

"Praise and Worship"  
Wavorly  
Album: *Conquering the Fear of Flight*  
Available 6-12-07

"Remedy"  
Ayiesha Woods  
Album: *Introducing Ayiesha Woods* -  
in stores now

"Speak (The Listening Song)"  
Cheri Keaggy  
Album: *Because He First Loved Us* -  
in stores now

"We Love You Jesus"  
Shane and Shane  
Album available in August 2007



***The Message is in the Music***

101 Armory Blvd.  
Lewisburg, PA 17837  
Phone: 570-523-1190  
Fax: 570-523-1114  
E-mail: [email@wgrc.com](mailto:email@wgrc.com)  
[www.wgrc.com](http://www.wgrc.com)

Contemporary Christian Music

**WGRC-FM is a non-denominational, para-church organization committed to serving the Lord Jesus Christ by reaching, encouraging and edifying people through the ministry of Christian Radio.**

**Our Mission:**

- To proclaim the person of Jesus Christ by means of contemporary Christian music programming.
- To draw people to a saving knowledge of and personal relationship with God's only Son, Jesus Christ.
- To support and strengthen individuals and families by communicating principles of "biblically-based, godly" living.
- To provide a wholesome, attractive radio format which will reach the greatest number of people.

One of the unique features about *WGRC* vs. commercial radio stations is that we rely completely on the Lord, working through listeners and supporting businesses, for financial underwriting. Without supporting listeners, there would be no *WGRC*! Click [here](#) to find out how you can help!