

The Message is
in the Music

WGRC Newsletter

Volume 8 Issue 5

September/October 2007

WGRC is heard on
frequencies:

91.3 FM
Lewisburg

90.7 FM and 107.1 FM
Williamsport

90.9 FM
Lewistown

91.9 FM
Pottsville

101.7 FM
State College

107.7 FM
Bloomsburg

Inside this issue:

Mark Your
Calendar 2

Bike ride raises
nearly \$8,000 2

Catch the Vision 3

Support WGRC 3

Hot New Music 4

WGRC hosts Friday Night High School Football

Schedule	
September 21	Central Columbia at Mifflinburg
October 5	Mifflinburg at Selinsgrove
October 19	Montoursville at Mifflinburg
November 2	Jersey Shore at Mifflinburg

Coverage begins at 6:45 p.m. Stay tuned during halftime for a featured testimony of a Christian athlete.

New in the afternoon: *Bruce Matthews*

Beginning October 8, Bruce Matthews will be hosting the afternoon drive time (2-6 p.m.) on WGRC. David Nelson will host middays (9 a.m.-2 p.m.).

Bruce comes from the Greenville, Ohio area where he was the voice during the Morning Drive shift at WJYW in Union City, Ohio. He also worked on Production, Imaging and some promotions.

At WGRC he will also have production responsibilities to include the recording of programs, imaging and producing spots.

"I am excited about the brand new door God has opened up for me to serve Him in Central PA at WGRC.

I am 'thrilled' to become a part of the community and all the new relationships God will send my way," Bruce says.

He believes Christian radio is important for many reasons. He says it is needed "because it reaches people in all phases and walks of life, from the strong believer to the non-Christian. Christian radio also compliments the area churches and their outreaches."

Aside from work, Bruce loves youth ministry. He also enjoys music (Casting Crowns), movies, photography, hiking, swimming, bowling, and other sports.

Joe Rose joins WGRC at the game

Tune in to WGRC on Fridays for live broadcasts of local high school football games.

This Friday, Joe Rose will join Don Casteline in the broadcast booth. Joe is a former Penn State University football player and co-founder of Play-by-FAITH ministry along with his wife, Ginger.

Play-by-FAITH is an athletic ministry committed to reaching the lost for Jesus Christ.

Joe and others in the ministry, work with athletes and coaches at PSU, Lock Haven and Bloomsburg Universities as well as area high schools.

Play-by-FAITH also hosts annual retreats and monthly meetings and provides outreach opportunities within the surrounding communities.

To find out more, visit www.playbyfaith.com.



Mark your calendar...

10-4-07 *WGRC* Skate Fellowship at Sunset Skating Rink, Routes 11&15 in Shamokin Dam; 7:00 - 9:30 p.m.; \$3 admission (skate rental is extra)

10-7-07 MercyMe, Aaron Shust and Monk and Neagle in concert at the Bryce Jordan Center, State College; 6:00 p.m.; click [here](#) for ticket info

10-21-07 Steven Curtis Chapman, Bethany Dillon and Sanctus Real in concert at the Community Arts Center, Williamsport; 6:00 p.m.; click [here](#) for ticket info

11-1-07 *WGRC* Skate Fellowship at Sunset Skating Rink, Routes 11&15 in Shamokin Dam; 7:00 - 9:30 p.m.; \$3 admission (skate rental is extra)

11-10,11-07 Clay Crosse in concert at Community Baptist Church in Montoursville; click [here](#) for more info



Bethany Dillon in concert October 21 with Steven Curtis Chapman and Sanctus Real

Station raises nearly \$8,000 during August bike ride

On August 10, *WGRC* riders geared up for the very first bike-a-thon along Pine Creek in Lycoming County. *WGRC* challenged 60 donors to sponsor the 60-mile ride. Seventy-seven listeners generously responded with \$7,886.

News Anchor John Callahan says, "It was a really great time and the Pine Creek Rail Trail is just a beautiful place to ride. Thanks so much to all the truly awesome *WGRC* listeners who helped us raise over \$7,000. God bless you one and all."

Riders, Don Casteline, Broadcast Manager, Chris Miller, Engineer, and



Pictured above: Chris Miller, Engineer, Don Casteline, Broadcast Manager, and John Callahan, News Anchor.

Callahan, completed 66 miles, a ride time totaling 5 hours and 53 minutes.

36 Hours of Mercy coming to *WGRC*...



Tune in October 15 and 16 to hear how you can make a difference in the life of a needy child!

Making an impact

- ◆ Thank you all for your good work. May God continue to bless you and your ministry.

-letter from Danville

- ◆ You wake me up every morning with music that praises God. Thanks so much for your ministry that blesses me every time I listen!

-letter from Loganton

- ◆ God bless you all. You are doing a fabulous job. I have been listening for years, and you continue to get better.

-note from Allenwood

- ◆ Thank you so much for giving happiness through Christian radio. I enjoy every program that I hear. It's on more than TV.

-note from Selinsgrove

Here's some *food* for thought...

How can YOU support *WGRC* financially without spending an extra cent?

It's as simple as *apple pie*!

The extra *bread* goes to *WGRC* right from your normal grocery bill.

Just contact *WGRC* to purchase gift cards to use at any Weis Markets or Giant Food Stores.

You purchase the gift cards at face value—you don't spend any extra money on your groceries and **5%** of your gift card amount is instantly donated to *WGRC*!

Just think—you can help support the ministry of *WGRC* just by doing your normal grocery shopping.

Call 1-800-546-*WGRC* to reserve your gift cards, then drop by the station to pick them up!

Thanks for helping to *produce* extra support for your favorite Contemporary Christian radio station!

Catch the Vision

As we are approaching the 20th year of *WGRC* being on the air, we can't help but to think of all of those who sacrificed and financially supported us so that your community could have a Contemporary Christian Music FM Radio Station.



We wish to thank all of you who have supported the ministry of *WGRC* in the past, BUT as we look forward, we see the harvest and the God given opportunity to expand and reach those in need of salvation through Jesus Christ and to communicate principles of biblically based, Godly living.

We are praying for partners to come along side and catch the vision. With your generous support, together we can continue to make a difference.

To this end, we have made available some opportunities for you to financially participate in the future of *WGRC*. Opportunities for both major and planned giving are highlighted on the "support" page of our website, wgrc.com.

We are looking forward to our Lord Jesus Christ being glorified through many more life changing testimonies as a result of our partnership with you on the mission field that the Lord has entrusted to us.

Thank you on behalf of *WGRC*, a beacon of hope and encouragement 24/7.

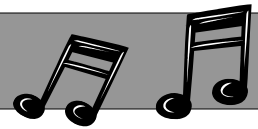
Blessings,
Pete Christensen
Development Director

There are now FIVE options available to become a *WGRC* supporter:

1. Check or Money Order
Send contributions to *WGRC* at
101 Armory Blvd.
Lewisburg, PA 17837
2. Credit and Debit Card Contributions
Use our [secure donations page](#) or call
1-800-546-*WGRC*
3. One-Step Giving
Make contributions to *WGRC* directly from your bank account. Use our [secure donations page](#) or call 1-800-546-*WGRC*
4. Grant Underwriting - for businesses, churches and organizations
5. Major and Planned Giving
See other special giving options on our secure donations page or call Pete Christensen, Development Director



Hot New Music



"Almighty God"

Tim Hughes

Album: *Hold Nothing Back* -
in stores now

"Captivated"

Shawn McDonald

Album: *Roots*

Available: 9-25-07

"Don't Get Comfortable"

Brandon Heath

Album: *Don't Get Comfortable* -
in stores now

"First Love"

Jeremy Horn

Album: *Atmosphere* - in stores now

"God Is In Control"

Avalon

Album: *Another Time, Another Place*
- in stores now

"In Better Hands"

Natalie Grant

Album: *Natalie Grant* - TBA

"In Wonder"

Newsboys

Album: *Go* - in stores now

"Made"

Caleb Rowden

Album: *Free From Ordinary* -
in stores now

"None But Jesus"

Christy Nockels

Album: *iWorship 24:7* -
in stores now

"On My Way"

Marie Miller

Album: *Marie Miller* - in stores now

"Only The World"

Mandisa

Album: *True Beauty* -
in stores now

"Our God Saves"

Paul Baloche

Album: *Our God Saves* -
in stores now

"Signature Of Divine (Yahweh)"

Need To Breathe

Album: *The Heat* - in stores now

"Speak To Me"

Geoff Moore

Album: *Speak To Me* - in stores now

"There Is A God"

33miles

Album: *33miles* - in stores now

"When Our Hearts Sing"

Rush Of Fools

Album: *Rush Of Fools* -
in stores now

"Where Your Heart Belongs"

Mainstay

Album: *Become Who You Are*
Available 9-25-07

"Writing On The Wall"

Mark Harris

Album: *Windows and Walls*
Available 9-25-07



The Message is in the Music

101 Armory Blvd.
Lewisburg, PA 17837

Phone: 570-523-1190

Fax: 570-523-1114

E-mail: email@wgrc.com

www.wgrc.com

Contemporary Christian Music

WGRC-FM is a non-denominational, para-church organization committed to serving the Lord Jesus Christ by reaching, encouraging and edifying people through the ministry of Christian Radio.

Our Mission:

To proclaim the person of Jesus Christ by means of contemporary Christian music programming.

To draw people to a saving knowledge of and personal relationship with God's only Son, Jesus Christ.

To support and strengthen individuals and families by communicating principles of "biblically-based, godly" living.

To provide a wholesome, attractive radio format which will reach the greatest number of people.

One of the unique features about *WGRC* vs. commercial radio stations is that we rely completely on the Lord, working through listeners and supporting businesses, for financial underwriting. Without supporting listeners, there would be no *WGRC*! Click [here](#) to find out how you can help!